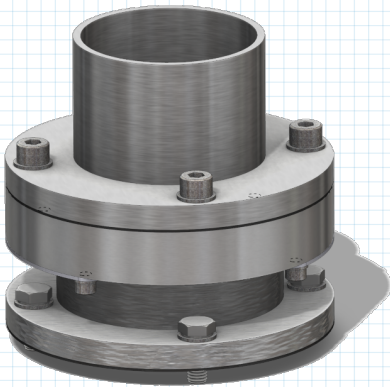


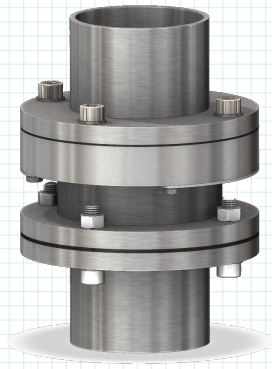


Swivel Joint

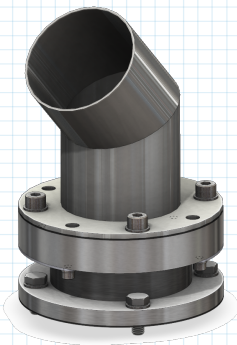
Rotating the UniGripper relative to the robot causes tensions in the vacuum hose and extra consideration is needed to make an integration that does not wear the hose too much. A swivel joint comes in handy to redirect the hose as the UniGripper rotates and thereby creates less tension. The swivel joint is an in-house manufactured product of our own design as there are no comparable swivel joints to find. Our swivel joint is of a simple but effective design in aluminium with a sealed high-quality ball bearing for durability even under the most challenging working conditions. The swivel joints are produced in four sizes and will fit hoses with inner diameter 63, 76, 102 and 125mm. The swivel joint is available for either direct mount on the tool or for inline mount with hose-hose connections.



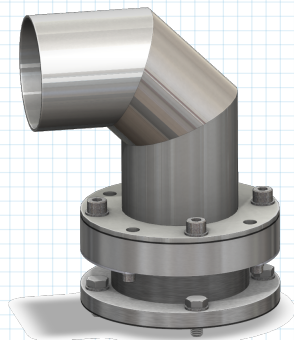
*Straight swivel joint,
base connection*



Hose-hose connection



45 degrees base connection



90 degrees base connection